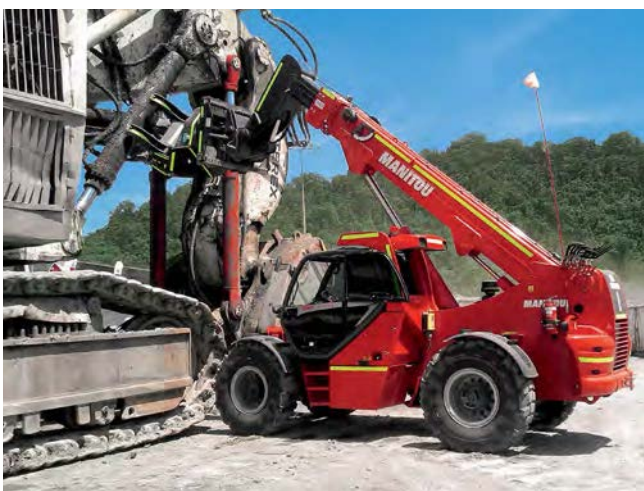




# CYLINDER HANDLER



- Complete range of cylinder handlers.
- 6 combined movements for more accuracy.
- 2 types of cylinder gripping systems for more adaptability: clamps (CH 10) or cables (CH 4).





\* Australia: use of reference 911968 mandatory

	CH 4	CH 10
Capacity (kg)	4000	10500
Diameter (mm) min/max	250 / 530	0 / 630
Teeth and/or tines	1850	3500

Machine compatibility		
Reference	906450*	
MHT-X 780	x	
MHT-X 860	x	
MHT 14350		Consult us
<b>E-RECO</b>	911968	939239
MHT 790	x	
MHT 1490	x	
MHT 10130	x	x-Reduce capacity
MHT 10180	x	x-Reduce capacity
MHT 10230	x	x

**MANDATORY MACHINE EQUIPMENT:** 

\* = 